

A few minutes about | **Seams**

JOFAMA

LINDSTRANDS

Halvarsson

A close-up photograph of a zipper on a dark, textured leather surface. The zipper pull is visible on the left side. The background is dark and slightly out of focus, showing the grain of the leather and some stitching details.

The design of a seam and the quality of its thread are very important in leathers to keep the panels together in the case of a fall.

- Short stitches penetrates the leather too frequently making it weaker.
- Long stitches cannot keep the leather panels together securely.
- In Jofama's leather garments there are between 5 and 8 stitches per inch and with an extra thick thread. This is ideal for motorcycle clothing.

There is at least one hidden stitch in all main seams on the outer layers regardless of outer material used.

**JOFAMA**    **LINDSTRANDS**    *Halvarssons*



The seam we use in exposed areas on leathers is a triple stitch design.

This means one hidden and two visible.

Front (visibel)

Back (invisible)

JOFAMA LINDSTRANDS Halvarssons

The seam we use in exposed areas on leathers is a triple stitch design.

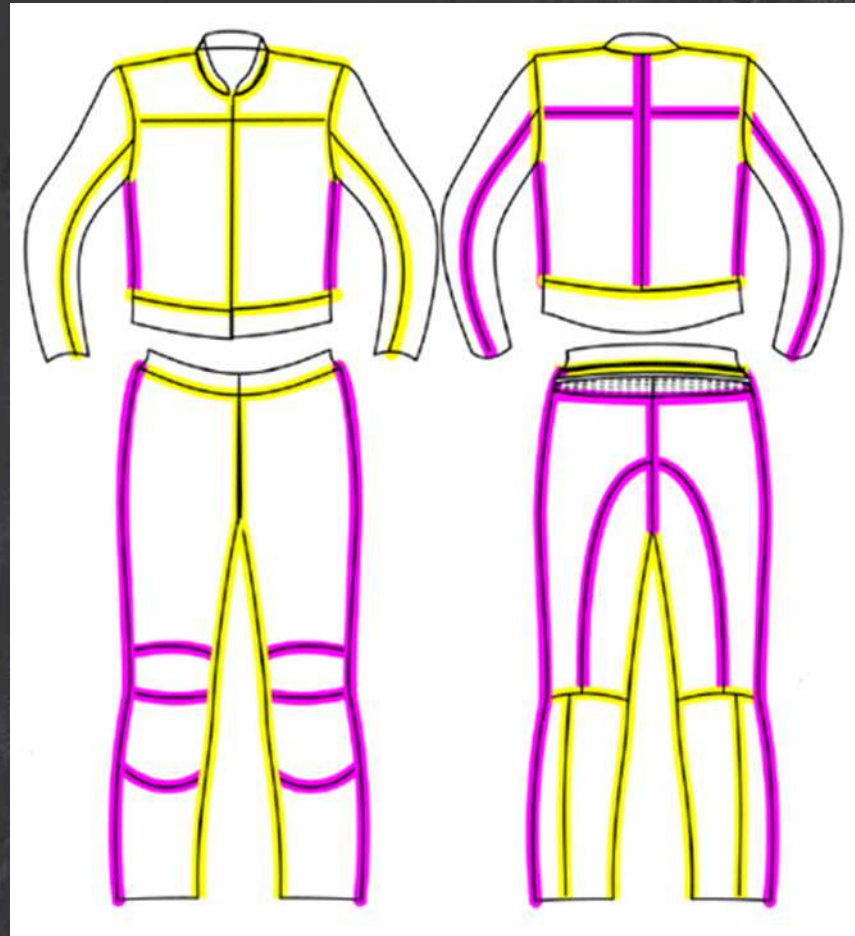
or two hidden and one visible.

Front (visible)

Back (invisible)

JOFAMA LINDSTRANDS Halvarssons

Purple lines indicate areas where triple seams are used.  
Yellow lines indicate where double seams are used.



JOFAMA

LINDSTRANDS

Halvarssons





In textile products the seam design is less important. There we use mainly double stitching and triple stitching only in extreme sports products, such as motocross.

In textiles the thickness of the thread is often greater than the textile panels it holds together. The design of the weave keeps the parts together better than the fibres of leather.

It is calculated that the thread/seam loses about 20% of its strength over a three-year period.

JOFAMA

LINDSTRANDS

Halvarssons

Thank you for taking the time to read about Jofama's  
products and our view on seams!

JOFAMA

LINDSTRANDS

Halvarsson